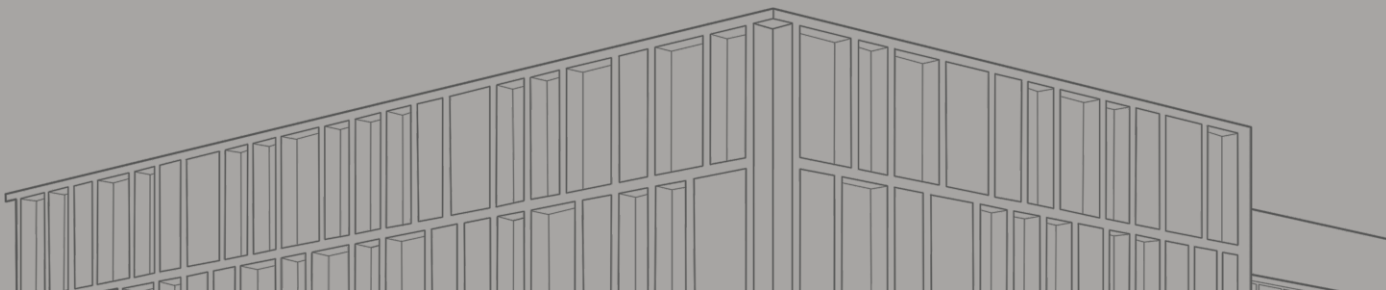


P R O M I N E N C E

G R A B T H E A T T E N T I O N

# MOVE YOUR BUSINESS TO A LOCATION, to catch the positive & prosperous vibration...

P R O M I N E N C E - a new-age commercial space has all the elements to give your business a definite success it deserves. offering the two-way advantage of s p ring road and vast tp road, a commercial space in P R O M I N E N C E is all about doubled exposure, two-fold growth. along with it, the ground + 6 storied project comes with trademark SANGATH<sup>®</sup> IPL advantages of best of amenities and facilities to give your business the great momentum. P R O M I N E N C E by SANGAHT<sup>®</sup> IPL with its strategic address of twin city hub offers the best of both the cities...in one place.



| GRAB THE ATTENTION





| GRAB THE ATTENTION

# SHOWROOMS

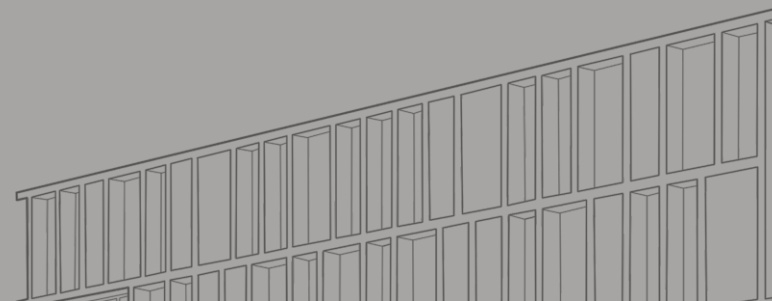
**SURROUNDED BY PROPOSED  
High-Density Residential Zone**

**200' WIDE RING ROAD  
Facing Showrooms**

**GRANDEUR  
Floor Height**

**AT STAR LOCATION  
of Twincity Hub**

ahmedabad @ gandhinagar  
**TWINCITY HUB**  
 a choice of global citizen



# OFFICES

**ON 24X365 LIVE LINK  
of sg road & airport**

---

**IN VICINITY OF  
giant corporates**

---

**CORNER PLOT ADVANTAGE  
200' ring road & 80' T P road**



GRAB THE ATTENTION

KOHICER  
HOTELS

BARK

G R A B T H E A T T E N T I O N

PROMINENCE



PROMINENCE



ENTRY

RAMP DN TO BASEMENT

--- 24 m. T.P. ROAD ---

-- 12 m. T. P. ROAD --

-- 9 m. SERVICE ROAD --

-- S.P. RING ROAD --

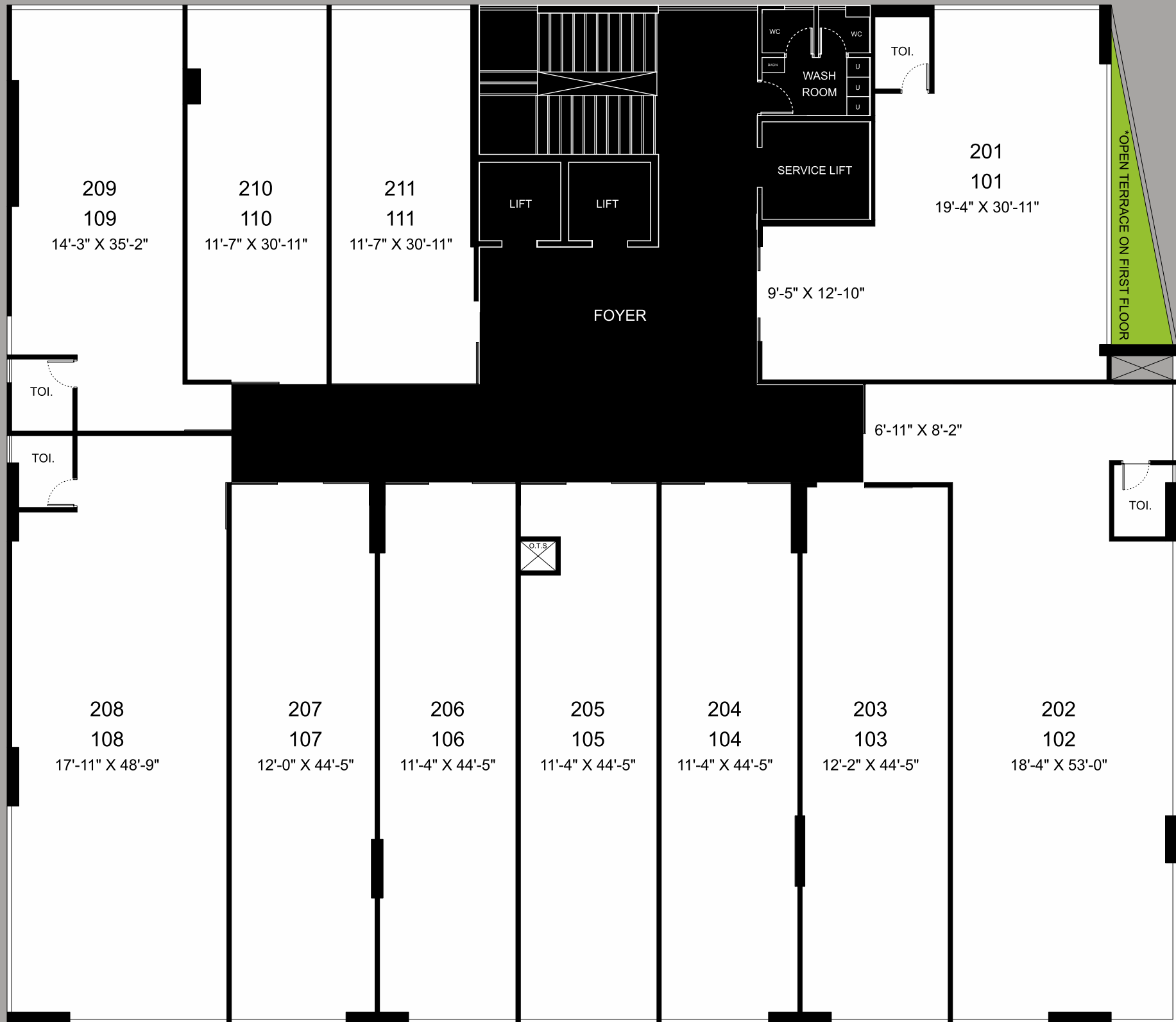
# GROUND FLOOR PLAN

# INVITING RETAIL FOYER



| GRAB THE ATTENTION



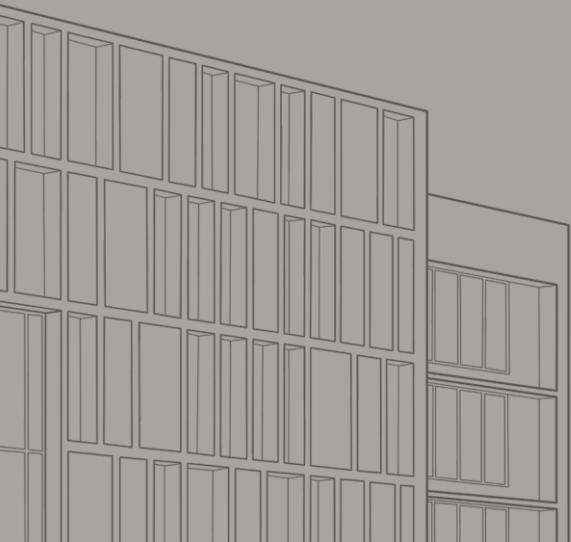


----- 24 m. T. P. ROAD -----

-- S.P. RING ROAD --

1<sup>ST</sup> & 2<sup>ND</sup> FLOOR PLAN

# EXCLUSIVELY DESIGNED FOYER FOR OFFICES



| GRAB THE ATTENTION

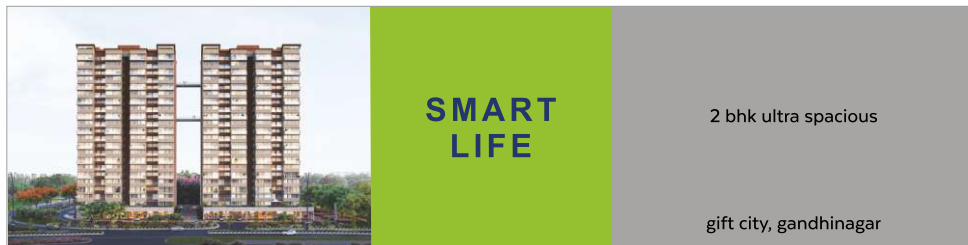




## SANGATH® IPL GROUP INITIATIVES

- carpet + wall area pricing (pay for what you own) since 2009,
- green building certified projects,
- renewable energy: apartments with wind + solar power,
- earthquake resistant RCC shear wall structures,
- usage of "a" class branded standard quality materials only,
- smart usage of resources, warranty for homes,
- after sales services through online CRM,
- exploring location,
- creating landmark.

## CURRENT PROJECTS



rera - phase 1 : pr/gj/gandhinagar/gandhinagar/others/maa07345/190820  
 rera - phase 2 : pr/gj/gandhinagar/gandhinagar/others/maa07381/250820



rera: pr/gj/ahmedabad/ahmedabad city/auda/caa05399/080519



## GUJARAT'S OUTSTANDING STRUCTURE AWARD 2020



SKYZ



POSH



PURE



TERRACES



TERRACES



TERRACES

journey towards **GREEN** excellence... since 1981



site: prominence by sangath IPL, 200'ring road,nr. vaishnodevi u/p, zundal, twincityhub,ahmedabad -382421

E : [frontdesk@sangathipl.com](mailto:frontdesk@sangathipl.com)

PH : + 91 909000 1981

W : [www.sangathipl.com](http://www.sangathipl.com)

Notes: All rights reserved to organizer for any changes in plan & specifications. • This brochure is only for advertisement and it shall not be considered as part of legal documents. • All the information & plans mentioned inside this brochure are for our proposed project "PROMINENCE by SANGATH" IPL". • This marketing brochure is for guidance only. It does not constitute part of an offer or contract. • Design is proposed & subject to change without any prior notice. • All elements mentioned inside are subject to grant of approvals from the relevant authorities.

rera no.: PR/GJ/GANDHINAGAR/GANDHINAGAR/AUDA/CAA08714/030721 [www.gujrera.gujarat.gov.in](http://www.gujrera.gujarat.gov.in)